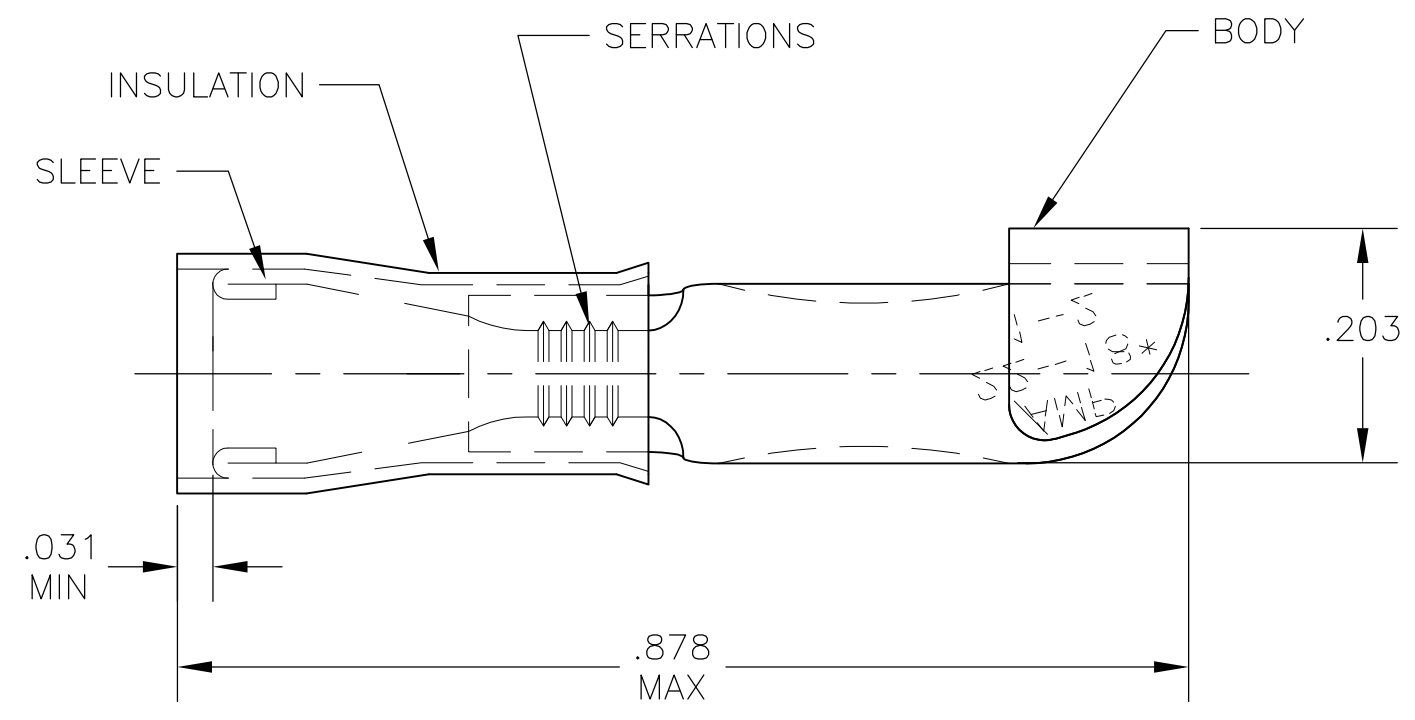


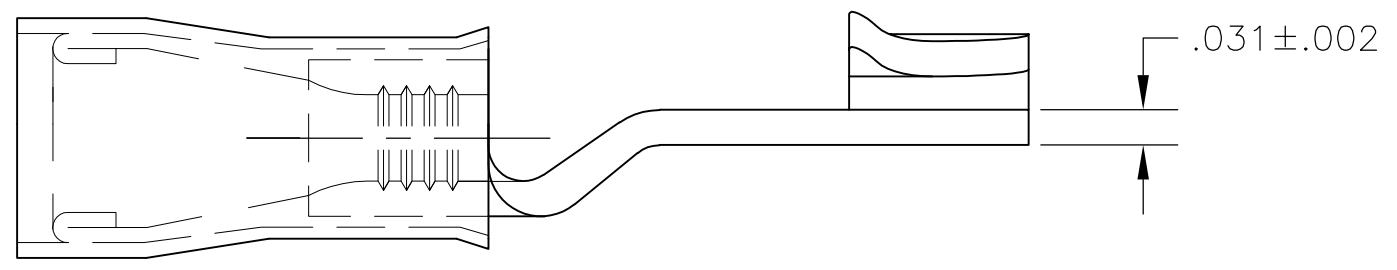
THIS DRAWING IS UNPUBLISHED. RELEASED FOR PUBLICATION  
 © COPYRIGHT - By - ALL RIGHTS RESERVED.

| LOC | DIST | REVISIONS   |                           |         |       |
|-----|------|-------------|---------------------------|---------|-------|
| P   | LTR  | DESCRIPTION | DATE                      | DWN     | APVD  |
| G   | 02   | E3          | REVISED PER ECO-12-002692 | 13FEB12 | KH DR |



|                                |                                |
|--------------------------------|--------------------------------|
| <b>AMP</b><br>WIRE RANGE       | <b>AW</b> FILE<br>E66717       |
| 22-16 AWG<br>SOLID OR STRANDED | 22-16 AWG<br>SOLID OR STRANDED |

- 1 STAMP AMP 22-18\* APPROX AS SHOWN  
22-16 TERMINALS ARE STAMPED 22-18 IN  
ACCORDANCE WITH MILITARY SPEC SAE AS7928  
COMMERCIAL WIRE RANGE IS 22-16
- 2 WIRE INSUL DIA .080-.125
- 3 MATERIAL: BODY - CU PER ASTM B152  
SLEEVE - CU PER ASTM B152  
INSULATION - NYLON
- 4 FINISH: BODY & SLEEVE: TIN PER ASTM B-545  
INSULATION - COLOR: RED
- 5 SUPERSEDED BY 320555



|      |                  |            |
|------|------------------|------------|
| 50   | LOOSE PIECE, BOX | 8-320555-2 |
| 2000 | ON TAPE          | 2-320555-1 |
| 500  | LOOSE PIECE      | 320555     |
| QTY  | PACKAGE TYPE     | PART NO    |

**AMP INCORPORATED**  
**CUSTOMER SERVICE SYSTEMS**

FOR ADDITIONAL PRODUCT INFORMATION OR COPIES OF DRAWINGS AND TECHNICAL DOCUMENTS  
 PRODUCT INFORMATION CENTER  
 1-800-522-6752

FOR APPLICATION TOOLING INFORMATION  
 TOOLING ASSISTANCE CENTER  
 1-800-722-1111

FOR ORDER ENTRY  
 1-800-526-5142

MAX RECOMMENDED OPERATING TEMPERATURE:  
 105°C [221°F]

VOLTAGE RATING:  
 300 V MAX

CIRCULAR MIL AREA:  
 0.26-1.65mm<sup>2</sup> [509-3260]  
 SOLID OR STRANDED

THIS DRAWING IS A CONTROLLED DOCUMENT.

DIMENSIONS: INCHES

TOLERANCES UNLESS OTHERWISE SPECIFIED:

|        |        |
|--------|--------|
| 0 PLC  | ± -    |
| 1 PLC  | ± -    |
| 2 PLC  | ± -    |
| 3 PLC  | ± .008 |
| 4 PLC  | ± -    |
| ANGLES | ± 5°   |
| FINISH |        |

MATERIAL 3

DWN jr\_ruth 12JUN09  
 CHK TOM MICHIELUTTI 12JUN09  
 APVD TOM MICHIELUTTI 12JUN09  
 PRODUCT SPEC  
 UL 486A  
 APPLICATION SPEC  
 WEIGHT -

**STE** TE Connectivity

NAME: TERMINAL, P.I.D.G., KNIFE DISCONNECT, WIRE SIZE: 22-16

|      |           |            |               |
|------|-----------|------------|---------------|
| SIZE | CAGE CODE | DRAWING NO | RESTRICTED TO |
| A3   | 00779     | C-320555   | -             |

CUSTOMER DRAWING SCALE 6:1 SHEET 1 OF 1 REV E3